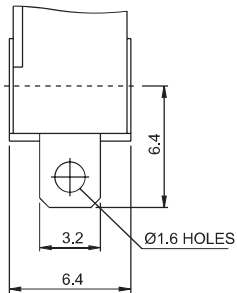


ORDERING INFORMATION

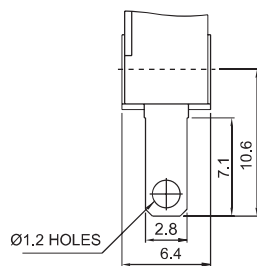
SERIES PREFIX	RATING CURRENT	OPERATING FORCE	ACTUATOR TYPE	TERMINAL TYPE	CONTACT ARRANGEMENT	ROHS CODE
S M — 0 5	P1 0.1A 30VDC 0.1A 125/250VAC	T MAX HEAVIER	00	A	0 S.P.D.T.	
	05 5A 125VAC/250VAC	Q HEAVIER	01	B	1 S.P.S.T NO	
	10 10.1A 125VAC/250VAC	H HEAVY	02	C	2 S.P.S.T NC	
		S STANDARD	03	D		
		L LIGHT	04	E		
		D SLIGHT	05	P		
			06			
			07			
			08			
			09			
			10			
			11			

TERMINAL TYPES (The thickness of each terminal is 0.6mm)

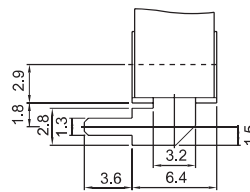
Solder terminal ATYPE



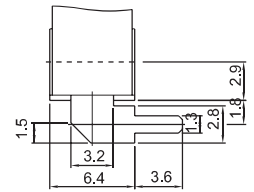
Quick connect terminal B TYPE (#110)



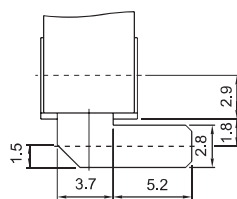
Side PCB terminal C TYPE



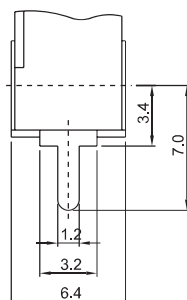
Side PCB terminal D TYPE



Side PCB terminal E TYPE

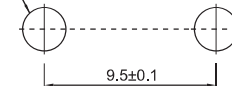


PCB terminal PTYPE

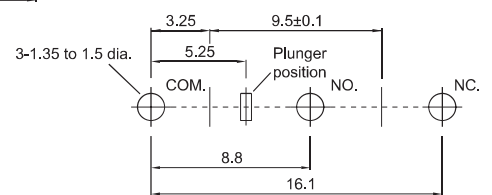


MOUNTING HOLES

2-2.4 dia. mounting holes or M2.3 screw holes.



(For PCB Terminal)



ORDERING CHARACTERISTICS

SWITCH TYPE	PART SUFFIX	OF MAX. (gf)	OP (mm)	PT MAX. (mm)	OT Min. (mm)	MD MAX. (mm)	FP MAX. (mm)	RF Min. (gf)
SM□□□-00□□-Z		H 249	11.4±0.3	1.1	0.4	0.2	12.2	50
		S 146						35
		L 104						20
SM□□□-01□□-Z		H 60	11.8±0.8	3.6	0.6	0.8	14.6	15
		S 35						10
		L 25						6
SM□□□-02□□-Z		H 55	11.8±0.9	4.0	0.6	0.8	14.9	13
		S 33						8
		L 25						6
SM□□□-03□□-Z		H 45	11.8±1.5	6.1	0.8	1.5	16.4	13
		S 25						6
		L 20						5
SM□□□-04□□-Z		H 56	13.7±1.0	4.6	0.8	0.8	17.3	13
		S 34						8
		L 25						5
SM□□□-05□□-Z		H 60	17.5±0.8	3.8	0.8	0.8	20.5	15
		S 35						8
		L 25						6
SM□□□-06□□-Z		H 48	19.0±1.5	5.7	1.0	1.0	23.2	10
		S 28						6
		L 20						4
SM□□□-07□□-Z		H 30	11.8±2.0	8.6	1.5	1.8	18.4	7
		S 20						4
		L 15						2
SM□□□-08□□-Z		H 30	-2.3±3.0	4.7	1.0	1.9	5.4	6
		S 20						4
		L 15						2
SM□□□-09□□-Z		H 18	11.8±3.0	13.3	1.0	2.9	22.1	4
		S 12						2.5
		L 8						1.5
SM□□□-10□□-Z		H 78	15.2±0.6	3.0	0.7	0.6	17.6	15
		S 46						10
		L 33						6
SM□□□-11□□-Z		H 55	15.1±1.5	5.2	0.6	0.9	18.8	13
		S 35						8
		L 26						5