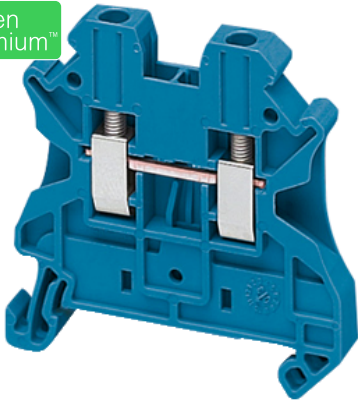


Product data sheet

Specifications



SCREW TERMINAL, FEED THROUGH, 2 POINTS, 2,5MM², BLUE

NSYTRV22BL

Product availability : Stock - Normally stocked in distribution facility

Main

Range	Lineryg
Product name	Lineryg TR
Product or Component Type	Terminal block
Device short name	TRV
Accessory / separate part category	Connection accessory
Terminal block type	Passthrough
Terminal block level	1
Mounting Mode	Clip-on
Nominal cross section	0.00 in ² (2.5 mm ²)
Length	1.88 in (47.7 mm)
Color	Blue
Quantity per Set	Set of 50

Complementary

Width	0.20 in (5.2 mm)
Height	1.87 in (47.5 mm)
Connections - terminals	1 x screw terminal upstream M3) 1 x screw terminal downstream M3)
Number of connections	2
Connection position	Sideways
Number of measurement input	2
Cable cross section	0.00...0.01 in ² (0.14...4 mm ²), solid with cable end 0.00...0.00 in ² (0.2...2.5 mm ²), flexible with cable end 0.00...0.01 in ² (0.14...4 mm ²), solid without cable end 0.00...0.01 in ² (0.14...4 mm ²), flexible without cable end
Tightening torque	4.43...5.31 lbf.in (0.5...0.6 N.m)
Wire stripping length	0.35 in (9 mm)
Tool type	Connection screwdriver Disconnection screwdriver
[Ue] rated operational voltage	1000 V EN/IEC 60947-7-1 600 V CSA 690 V ATEX Exe II Ex II 2 GD 600 V cURus

Line Rated Current	24 A EN/IEC 60947-7-1 22 A ATEX Exe II Ex II 2 GD 20 A cURus 20 A CSA
Material	Polyamide 6/6 insulating case Copper alloy connector and screw Copper alloy commoning link Chromium-nickel steel spring
Dielectric loss	0.01 at 1 MHz IEC 60250 0.01 at 1 MHz VDE 0303-T4
Dielectric constant	3.7 at 1 MHz
Resistivity	10000 MΩ.m IEC 60093 10000 MΩ.m VDE 0303-T30
Surface resistance	1000 GΩ IEC 60093 1000 GΩ VDE 0303-T30
Creep resistance	500 CTI (> 400 kV) IEC 60093 500 CTI (> 400 kV) VDE 0303-T30
Flame retardance	V0 0.03 in (0.8 mm) UL 94
Net Weight	0.29 oz (8.2 g)
Range compatibility	Prisma G Prisma P Prisma PH Prisma Pack Spacial Kaedra Pragma TeSys Thalassa Thalassa TBP Thalassa Thalassa TBS
Product Compatibility	Spacial enclosures

Environment

Product Certifications	IEC-Ex DNV GL ATEX VDE CSA cURus EAC LR
Dielectric strength	1000 V IEC 60243-1
Ambient air temperature for operation	-40...266 °F (-40...130 °C) IEC 60216-1 -40...266 °F (-40...130 °C) VDE 0304-T21

Ordering and shipping details

Category	21715-IEC TERMINAL BLOCKS-NSY,AM1,DF6,GK1
Discount Schedule	CP5
GTIN	3606480531804
Returnability	Yes
Country of origin	DE

Packing Units

Unit Type of Package 1	PCE
Number of Units in Package 1	1
Package 1 Height	1.97 in (5 cm)
Package 1 Width	2.76 in (7 cm)
Package 1 Length	10.04 in (25.5 cm)
Package 1 Weight	0.25 oz (7 g)

Unit Type of Package 2	BB1
Number of Units in Package 2	50
Package 2 Height	1.97 in (5 cm)
Package 2 Width	2.76 in (7 cm)
Package 2 Length	10.04 in (25.5 cm)
Package 2 Weight	13.93 oz (395 g)
Unit Type of Package 3	S03
Number of Units in Package 3	1350
Package 3 Height	11.81 in (30 cm)
Package 3 Width	11.81 in (30 cm)
Package 3 Length	15.75 in (40 cm)
Package 3 Weight	24.60 lb(US) (11.158 kg)

Offer Sustainability

Sustainable offer status	Green Premium product
California proposition 65	WARNING: This product can expose you to chemicals including: Lead and lead compounds, which is known to the State of California to cause cancer and birth defects or other reproductive harm. For more information go to www.P65Warnings.ca.gov
REACH Regulation	REACH Declaration
EU RoHS Directive	Compliant EU RoHS Declaration
Mercury free	Yes
China RoHS Regulation	China RoHS declaration Product out of China RoHS scope. Substance declaration for your information.
RoHS exemption information	Yes
Environmental Disclosure	Product Environmental Profile
WEEE	The product must be disposed on European Union markets following specific waste collection and never end up in rubbish bins.
Halogen content performance	Halogen free plastic parts product

Contractual warranty

Warranty	18 months
-----------------	-----------

Recommended replacement(s)