

# D fuse-bases

## FUSE HOLDERS, FUSE BASES AND SUPPORTS

### IEC DO & D FUSE BASES



The D fuse-system is the first generation of the screw fuse-system in the German DIN standard. It is still used in many installations.

Applications are low voltage distribution units, where non trained persons are allowed to change the fuse-links.

The D fuse-range comprises the sizes NDZ, DII, DIII, DIV, DV.

The range of applications for D fuse-links “gG” is the protection of cables and power lines. They limit and cut off unacceptable overcurrents and short circuit currents up to their nominal breaking capacity. D fuse-links “gG” also protect equipments and installations against dynamic effects of high short circuit currents.

### TECHNICAL DATA OVERVIEW

Voltage AC	500 VAC
Voltage DC	500 VDC
Ampere Range (A)	25 ... 63 A
Product Size	DII/DIII
Number of poles	single-pole, triple-pole

### FEATURES & BENEFITS

- Insulated body suitable for high mechanical and thermal impacts
- Top and bottom contacts made of nickel plated copper alloy
- Safe cut off short circuits and over currents due to special design of fuse element
- Clear indication of operation condition due to coloured indicator on top contact
- Low power dissipation
- Optimized size
- Resistant to aging
- Free of lead, cadmium, mercury, chrome 6 (rohs conformity)

### APPLICATIONS

- House incoming units
- Meter distribution units
- Distribution cabinets
- Installation cabinets
- Fuse boxes

### STANDARDS

- DIN VDE 0636-3



# D fuse-bases

## PRODUCT RANGE



00685.110000

### Size DII with touch protection, DIN rail mounting

Catalog number	Item number	Size	Rated voltage AC (IEC)	Rated voltage DC (IEC)	Rated current I <sub>n</sub>	Number of poles/phases	Connection	Cable termination	Package	Weight
00685.110000	D211511	DII	500 V	500 V	25 A	1	Cross section 1,5 to 10 mm <sup>2</sup>	1	10	0.12 kg



00685.100000

### Size DII without touch protection, DIN rail mounting

Catalog number	Item number	Size	Rated voltage AC (IEC)	Rated voltage DC (IEC)	Rated current I <sub>n</sub>	Number of poles/phases	Connection	Cable termination	Package	Weight
00685.100000	K207055	DII	500 V	500 V	25 A	1	Cross section 1,5 to 10 mm <sup>2</sup>	1	15	0.10 kg



00081.110000

### Size DII with touch protection, screw mounting

Catalog number	Item number	Size	Rated voltage AC (IEC)	Rated voltage DC (IEC)	Rated current I <sub>n</sub>	Number of poles/phases	Connection	Cable termination	Package	Weight
00081.110000	Z219189	DII	500 V	500 V	25 A	1	Cross section 1,5 to 10 mm <sup>2</sup>	1	10	0.12 kg



00081.100000

### Size DII without touch protection, screw mounting

Catalog number	Item number	Size	Rated voltage AC (IEC)	Rated voltage DC (IEC)	Rated current I <sub>n</sub>	Number of poles/phases	Connection	Cable termination	Package	Weight
00081.100000	K218670	DII	500 V	500 V	25 A	1	Cross section 1,5 to 10 mm <sup>2</sup>	1	15	0.1 kg



00686.410000

### Size DIII with touch protection, DIN rail mounting

Catalog number	Item number	Size	Rated voltage AC (IEC)	Rated voltage DC (IEC)	Rated current I <sub>n</sub>	Number of poles/phases	Connection	Cable termination	Package	Weight
00686.410000	C216110	DIII	500 V	500 V	63 A	1	Cross section 2,5 to 25 mm <sup>2</sup>	2	10	0.17 kg



00686.400000

### Size DIII without touch protection, DIN rail mounting

Catalog number	Item number	Size	Rated voltage AC (IEC)	Rated voltage DC (IEC)	Rated current I <sub>n</sub>	Number of poles/phases	Connection	Cable termination	Package	Weight
00686.400000	V215597	DIII	500 V	500 V	63 A	1	Cross section 2,5 to 25 mm <sup>2</sup>	2	15	0.15 kg

# D fuse-bases

## PRODUCT RANGE



00685.700000

### Size DII/DIII cover caps for touch protection

Catalog number	Item number	Size	Number of poles/phases	Design	Package	Weight
00685.700000	H214068	DII	1	Width 40mm	30	15 g
00686.700000	X215093	DIII	1	Width 50mm	30	17 g
00686.709000	X215599	DIII	1	Width 54mm	30	18.5 g



02071.000000

### D Screw caps, plastic-design, with testing hole

Catalog number	Item number	Size	Thread	Rated voltage AC (IEC)	Rated voltage DC (IEC)	Rated current I <sub>n</sub>	Design	Package	Weight
02071.000000	L201720	DII	E27	500 V	500 V	25 A	with testing-hole	20	28.7 g
02072.000000	E214019	DIII	E33	500 V	500 V	63 A	with testing-hole	20	27.7 g



00590.000200

### D Screw caps, porcelain-design

Catalog number	Item number	Size	Thread	Rated voltage AC (IEC)	Rated voltage DC (IEC)	Rated current I <sub>n</sub>	Package	Weight
<b>with testing-hole</b>								
00590.000200	L217130	DII	E27	500 V	500 V	25 A	20	38.8 g
00591.000200	R217641	DIII	E33	500 V	500 V	63 A	20	64.6 g
<b>with testing-hole and stainless steel</b>								
00690.000200	E218619	DII	E27	500 V	500 V	25 A	20	41 g
00691.000200	B213004	DIII	E33	500 V	500 V	63 A	20	37.3 g
<b>without testing-hole</b>								
00589.000000	Z216613	NDZ	E16	500 V	500 V	25 A	50	21.2 g
00690.000000	Z218108	DII	E27	500 V	500 V	25 A	20	39.5 g
00691.000000	F211973	DIII	E33	500 V	500 V	63 A	20	60 g
<b>long design</b>								
00605.000000	L218671	DIII	E33	690 V	-	16 A	25	0.11 kg



00690.000200



00589.000000



00605.000000

# D fuse-bases

## PRODUCT RANGE



01657.002000



01658.063000

### D Screw gauge pieces

Catalog number	Item number	Size	Rated current I <sub>n</sub>	Colour	Package	Weight
01657.002000	A219190	DII	2 A	pink	25	14.2 g
01657.004000	D219722	DII	4 A	brown	25	14.2 g
01657.006000	L222167	DII	6 A	green	25	14.2 g
01657.010000	F222921	DII	10 A	red	25	14.2 g
01657.016000	P200711	DII	16 A	grey	25	14.2 g
01657.020000	D201253	DII	20 A	blue	25	14.2 g
01657.025000	P201769	DII	25 A	yellow	25	14.2 g
01658.035000	C207071	DIII	35 A	black	25	22 g
01658.050000	E211512	DIII	50 A	white	25	22 g
01658.063000	J212022	DIII	63 A	copper	25	22 g



01652.002000

### D Gauge rings

Catalog number	Item number	Size	Rated current I <sub>n</sub>	Colour	Package	Weight
01652.002000	W215092M	DII	2 A	pink	25	4.9 g
01652.004000	W215598M	DII	4 A	brown	25	4.9 g
01652.006000	D216111M	DII	6 A	green	25	4.9 g
01652.010000	A216614M	DII	10 A	red	25	4.9 g
01652.016000	M217131M	DII	16 A	grey	25	4.9 g
01652.020000	S217642M	DII	20 A	blue	25	4.9 g
01652.025000	A218155M	DII	25 A	yellow	25	4.9 g
01653.025000	Q201770M	DIII	25 A	yellow	25	7.6 g
01653.035000	L207079M	DIII	35 A	black	25	7.6 g
01653.050000	F211513M	DIII	50 A	white	25	7.6 g



01657.993000

### Key for D Gauge pieces

Catalog number	Item number	Size	Package	Weight
01657.993000	E216112	DII/DIII	10	22.5 g



00181.900000

### D Touch protection rings

Catalog number	Item number	Size	Package	Weight
00181.900000	K222120	DII	50	15 g
00182.900000	A222870	DIII	40	18.7 g



00581.000000

### D Adapter fittings

Catalog number	Item number	Size	Design	Package	Weight
00581.000000	C212545	DII -> DIII	for DII fuse-links to DIII fuse-bases	24	14.1 g

# D fuse-bases

## PRODUCT RANGE



02071.800000

### D Locking caps

Catalog number	Item number	Size	Thread	Rated current I <sub>n</sub>	Colour	Design	Package	Weight
02071.800000	B216615E	DII	E27	25 A	black	EVU, for authorized personal only	5	32.7 g
02071.810000	N217132E	DII	E27	25 A	red	Industrie	5	32.7 g
02072.800000	T217643E	DIII	E33	63 A	black	EVU, for authorized personal only	5	38.5 g
02072.810000	B218156E	DIII	E33	63 A	red	Industrie	5	38.5 g



01714.820000

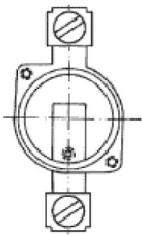
### D Locking keys

Catalog number	Item number	Features	Design	Package	Weight
01714.820000	K213564A	-	for authorized personnel only (Utilities)	1	37 g
01714.830000	J214069A	Special key for locking caps	-	1	43 g

## DIMENSIONS

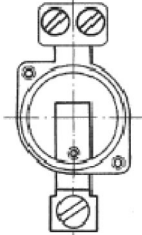
### Terminal type

Clamping yoke



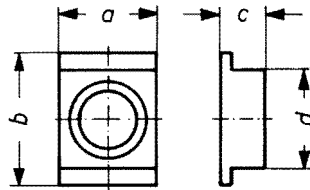
Clamping yoke

Clamp strap with 2 screws



Clamping yoke

### D Protection cover



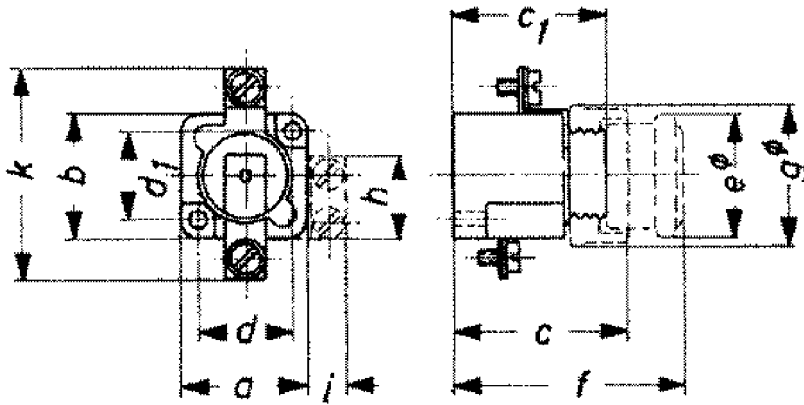
Article Number	a	b	c	d
00685.700000	40	90	22	45
00686.700000	50	90	22	45
00685.709000	45	90	22	45
00686.709000	54	90	22	45
00625.700000	107	107	51	
00626.700000	127	130	51	

Dimensions in mm

# D fuse-bases

## DIMENSIONS

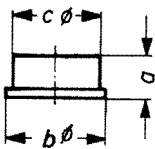
### D Fuse-bases single-pole



Article Number	Size	Mounting	Touch protection cover	a	b	c	d	d1	e	f	g	k
00685.110000	DII	snap-on	Yes	38	40	60	29	27	38	82	43	60
00686.410000	DIII	snap-on	Yes	38	40	60	29	27	38	82	43	60
00685.100000	DII	snap-on	No	38	40	60	29	27	38	82	43	60
00686.400000	DIII	snap-on	No	38	40	60	29	27	38	82	43	60
00081.110000	DII	screw	Yes	46	44	57	35	33.5	48	84	52	73
00072.410000	DIII	screw	Yes	46	44	57	35	33.5	48	84	52	73
00081.100000	DII	screw	No	46	44	57	35	33.5	48	84	52	73
00072.400000	DIII	screw	No	46	44	57	35	33.5	48	84	52	73

Dimensions in mm

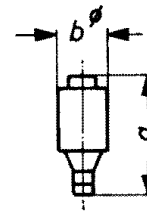
### D touch-protection-rings



Article Number	a	b	c
00181.900000	17,5	44.5	40.5
00182.900000	19	54	50.5

Dimensions in mm

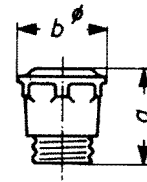
### D fuse-links



Size	a	b
NDZ	50	12
DII	50	22
DIII	50	27

Dimensions in mm

### D screw-caps



Article Number	a	b
00590.000200	42	34
00591.00200	43	42
00589.000000	34	27
00605.000000	65	42.5
00690.000000	42	34
00691.000000	43	42
02071.000000	42	33
02072.000000	43	40

Dimensions in mm