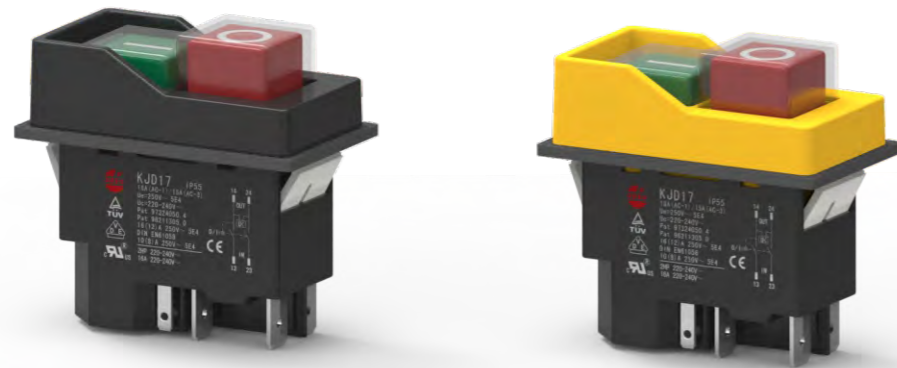


KJD17FT
KJD17-16FT



KJD17F
KJD17-16F



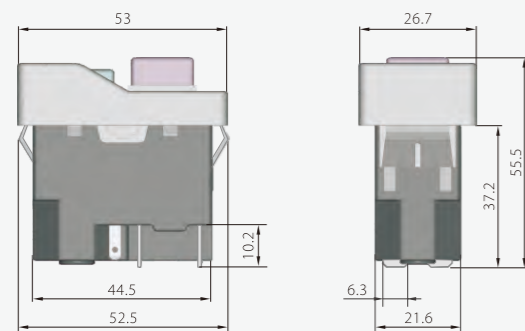
Description

These switches have the following functions that derived from power-off and under voltage protection:

- 1.Double pole cut off
 - 2.Brake function with one pole cut off
 - 3.These two versions can be combined with overload protection switch to achieve under voltage and overload protection.
- The advantage of our patented technology is high current with small size.

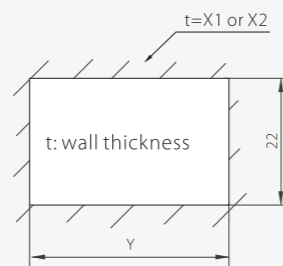
Reference Dimension

KJD17F KJD17FT KJD17-16F KJD17-16FT



Mounting Size

KJD17F KJD17FT KJD17-16F KJD17-16FT



X1:value "t" with Rubber Gasket
X2:value "t" without Rubber Gasket

X1	X2	Y
1~1.5	1.5~2.5	46 ^{+0.1} ₀
1.5~2.5	2.5~3.5	46.4 ^{+0.1} ₀

Specifications

Standard	TUV(EN60947)	TUV(EN61058)		UL,CUL(UL508,E195428)		VDE,CE(DIN EN61058,VDE0630)		
		KJD17	KJD17-16	KJD17	KJD17-16	KJD17	KJD17-16	
Type	KJD17	KJD17	KJD17-16	KJD17	KJD17-16	KJD17	KJD17-16	
Rated Voltage	250V~	120V~	250V~	120V~	250V~	120V~	220-240V~	250V~
Rated Current	AC-1:18A AC-3:15A	10(8)A 18(16)A	10(8)A 16(12)A	16(16)A	18(16)A	16A 1/2HP	16A 2HP	10(8)A
Coil Voltage	220-240V~ or 100-120V~							
Rated Frequency	50/60Hz							
Degree of Protection	IP54 (EN60947) IP55(EN61058)							
Number of operating Cycles	5E4							
Ambient Temperature	T55,T85,T85/55							

Order options

Panel	Function	Coil Voltage/Frequency	Marking on Button	Accessories	
P1 Frame Without Waterproof Cover 	F1 Without Remote Trip 2NO 	V1 110V 50Hz V2 120V 50/60Hz V3 220V-240V 50/60Hz V4 230V 50Hz	M1	A1 Water proof Cover A2 Rubber Sleeve A3 Rubber Seal	
			F2 With Remote Trip 2NO 		M2
			F3 With Remote Trip NO+NC 		M3
			F4 Without Remote Trip NO+NC 		M4
P2 Black Frame 	F3 With Remote Trip NO+NC 		M5		
			F4 Without Remote Trip NO+NC 		M6
P3 Yellow Frame 	F3 With Remote Trip NO+NC 		M5		
			F4 Without Remote Trip NO+NC 		M6

Note:Function F3,F4 only Suitable for Panel P2,P3