

System overview

Small distribution boards ALPHA

SIMBOX XL



SIMBOX WP



ALPHA SIMBOX XL



Flush-mounting and hollow-wall distribution boards



Surface-mounting distribution boards



Multimedia distribution boards

Accessories



Terminal strips



RCCB terminals



Door locking kit



Mounting aid for flush mounting

ALPHA SIMBOX WP



Surface-mounting distribution boards

Accessories



Covers



N/PE terminal strips



Inner partitions



Safety cylinder locks

Note:

You will find a detailed range of accessories with the basic units.

ALPHA SIMBOX XL small distribution boards

Flush-mounting and hollow-wall distribution boards, rated current up to 63 A

Recess dimensions			Type	Complete supply	Project supply	Expansion package
Width	Depth	Height		IP30	IP30	
Flush-mounting distribution boards						
359 mm	88 mm	393 mm	1-tier	8GB5012-1KM	8GB5212-1KM01	8GB5212-3KM01
		518 mm	2-tier	8GB5024-1KM	8GB5224-1KM01	8GB5224-3KM01
		643 mm	3-tier	8GB5036-1KM	8GB5236-1KM01	8GB5236-3KM01
		768 mm	4-tier	8GB5048-1KM	8GB5248-1KM01	8GB5248-3KM01
Hollow-wall distribution boards						
323 mm	88 mm	360 mm	1-tier	8GB5012-4KM	8GB5212-2KM01	8GB5212-4KM01
		485 mm	2-tier	8GB5024-4KM	8GB5224-2KM01	8GB5224-4KM01
		610 mm	3-tier	8GB5036-4KM	8GB5236-2KM01	8GB5236-4KM01
		735 mm	4-tier	8GB5048-4KM	8GB5248-2KM01	8GB5248-4KM01

Accessories

Terminal strips with plug-in terminals

Type	Potential 1	Potential 2	Article No.
N/PE	N = 3 × 25 + 14 × 4 mm ²	PE = 3 × 25 + 14 × 14 mm ²	8GB5016-5KM
N/N	N1 = 3 × 25 + 14 × 4 mm ²	N2 = 3 × 25 + 14 × 14 mm ²	8GB5017-5KM
N	N = 6 × 25 + 28 × 4 mm ²		8GB5020-5KM
PE	PE = 6 × 16 + 28 × 5 mm ²		8GB5021-5KM

Terminal strips with screw terminals

Type	Potential 1	Potential 2	Article No.
N/PE	N = 3 × 16 + 14 × 10 mm ²	PE = 3 × 16 + 14 × 10 mm ²	8GB5008-5KM
N/N	N1 = 3 × 16 + 14 × 10 mm ²	N2 = 3 × 16 + 14 × 10 mm ²	8GB5015-5KM
N	N = 6 × 16 + 28 × 10 mm ²		8GB5010-5KM
PE	PE = 6 × 16 + 28 × 10 mm ²		8GB5011-5KM

RCCB terminals

Use	Potential	Article No.
For distributing the neutral conductor to two RCCBs	N = 3 × 16 + 2 × 10 mm ²	8GB5005-5KM

Door locking kit

Use	Feature	Article No.
For snapping into door handle	With two keys	8GB5006-5KM



Blanking strips

Width	Feature	Color	Article No.
12 MW	Increased flame protection up to 850 °C	White	8GB4683

Mounting aid for flush mounting

Use	Article No.
For flush-mounting and hollow-wall distribution boards	8GB5013-5KM

Surface-mounting distribution boards, rated current up to 63 A

				Distribution boards without door	Metal doors, white	Plastic doors, white
Degree of protection				IP30	IP30	IP30
						
External dimensions				Protection class II	Protection class II	Protection class II
Width	Depth	Height	Type			
Surface-mounting distribution boards						
305 mm	99 mm	250 mm	1-tier	8GB5012-0KM	8GB5001-5KM	8GB5001-5KM01
		375 mm	2-tier	8GB5024-0KM	8GB5002-5KM	8GB5002-5KM01
		515 mm	3-tier	8GB5036-0KM	8GB5003-5KM	8GB5003-5KM01
		640 mm	4-tier	8GB5048-0KM	8GB5004-5KM	8GB5004-5KM01

Accessories

Terminal strips with plug-in terminals



Type	Potential 1	Potential 2	Article No.
N/PE	N = 3 × 25 + 14 × 4 mm ²	PE = 3 × 25 + 14 × 14 mm ²	8GB5016-5KM
N/N	N1 = 3 × 25 + 14 × 4 mm ²	N2 = 3 × 25 + 14 × 14 mm ²	8GB5017-5KM
N	N = 6 × 25 + 28 × 4 mm ²		8GB5020-5KM
PE	PE = 6 × 16 + 28 × 5 mm ²		8GB5021-5KM

Terminal strips with screw terminals



Type	Potential 1	Potential 2	Article No.
N/PE	N = 3 × 16 + 14 × 10 mm ²	PE = 3 × 16 + 14 × 10 mm ²	8GB5008-5KM
N/N	N1 = 3 × 16 + 14 × 10 mm ²	N2 = 3 × 16 + 14 × 10 mm ²	8GB5015-5KM
N	N = 6 × 16 + 28 × 10 mm ²		8GB5010-5KM
PE	PE = 6 × 16 + 28 × 10 mm ²		8GB5011-5KM

RCCB terminals



Use	Potential	Article No.
For distributing the neutral conductor to two RCCBs	N = 3 × 16 + 2 × 10 mm ²	8GB5005-5KM

Door locking kit



Use	Feature	Article No.
For snapping into door handle	With two keys	8GB5006-5KM

Blanking strips



Width	Feature	Color	Article No.
12 MW	Increased flame protection up to 850 °C	White	8GB4683

ALPHA SIMBOX XL small distribution boards

Multimedia distribution boards, rated current up to 63 A

Surface-mounting distribution boards

Degree of protection IP30



Recess dimensions			Type	Protection class II
Width	Depth	Height		
Flush-mounting and hollow-wall distribution boards				
323 mm	88 mm	605 mm	3-tier	8GB5036-3KM01
		730 mm	4-tier	8GB5048-3KM01
Surface-mounting distribution boards				
323 mm	88 mm	605 mm	3-tier	8GB5036-3KM00
		730 mm	4-tier	8GB5048-3KM00

Accessories

Connecting lugs

Use

For installing several distribution boards in a row, vertically or horizontally

Article No.

8GB5025-5KM

ALPHA SIMBOX WP small distribution boards

Surface-mounting distribution boards, rated current up to 63 A

Unequipped surface-mounting distribution boards

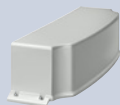
Degree of protection IP65



Type	External dimensions			Protection class II
	Height	Width	Depth	
Surface-mounting distribution boards				
1-tier	210 mm	143 mm	100 mm	8GB1371-0
		215 mm	100 mm	8GB1371-1
	260 mm	298 mm	140 mm	8GB1371-2
	285 mm	410 mm	140 mm	8GB1371-3
2-tier	420 mm	298 mm	140 mm	8GB1372-2
	463 mm	410 mm	140 mm	8GB1372-3
3-tier	655 mm	410 mm	140 mm	8GB1373-3
4-tier	878 mm	410 mm	160 mm	8GB1374-3

Accessories

Covers



- For connection of conduit and cable duct entries
- Snap-on mounting

MW	Article No.
12	8GB2051-0
18	8GB2051-1

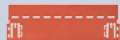
N/PE terminal strips



- For snapping onto device holder

MW	Potential 1	Potential 2	Article No.
8	N = 1 × 25 + 7 × 10 mm ²	PE = 1 × 25 + 7 × 10 mm ²	8GB2052-0
12	N = 3 × 25 + 10 × 10 mm ²	PE = 3 × 25 + 10 × 10 mm ²	8GB2052-1
18	N = 5 × 25 + 14 × 10 mm ²	PE = 5 × 25 + 14 × 10 mm ²	8GB2052-2

Inner partitions, horizontal



MW	Article No.
12	8GB2053-0
18	8GB2053-1

Front covers

MW	Article No.
12	8GB2054-0
18	8GB2054-1

Safety cylinder locks



Material	Scope of supply	Article No.
Metal	With key	8GB2055-0

Blanking strips



Type	Color	Article No.
For 12 MW (1 MW = 18 mm)	RAL 7035 (light gray)	8GK9910-0KK00