

Electromechanical pressure switches

OsiSense XM, type XML

Size 300 bar (4350 psi)

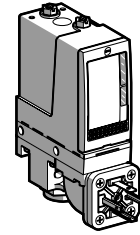
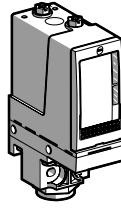
Adjustable differential, for regulation between 2 thresholds

Switches with 1 CO single-pole contact

Fluid connection G 1/4 (female)

Pressure switches type XML B

With setting scale



Adjustable range of switching point (PH) (Rising pressure)	22...300 bar (319...4350 psi)	
---------------------------------------------------------------	-------------------------------	--

Electrical connection	Terminals	DIN connector
-----------------------	-----------	---------------

References (1)

Fluids controlled (2) (5)	Hydraulic oils, up to + 160°C	XML B300D2S12	XML B300D2C11
	Fresh water, sea water, up to + 160°C	XML B300E2S12	XML B300E2C11
	Corrosive fluids, air, up to + 160°C	XML B300N2S12	XML B300N2C11
Weight (kg)	0.750		0.780

Complementary characteristics not shown under general characteristics (page 2/77)

Possible differential (subtract from PH to give PB)	Min. at low setting (3)	19.4 bar (281.3 psi)
	Min. at high setting (4)	37 bar (536.5 psi)
	Max. at high setting	200 bar (2900 psi)
Maximum permissible pressure	Per cycle	375 bar (5437.5 psi)
	Accidental	675 bar (9787.5 psi)
Destruction pressure	1350 bar (19,575 psi)	
Mechanical life	3 x 10 ⁶ operating cycles	
Cable entry for terminal models	1 entry tapped M20 x 1.5 mm for ISO cable gland, clamping capacity 7 to 13 mm	
Connector type for connector models	DIN 43650 A, 4-pin male. For suitable female connector, see page 2/130	
Pressure switch type	Piston	

(1) For 1 entry tapped for n° 13 cable gland, replace S12 by S11 (example: XML B300D2S12 becomes XML B300D2S11).

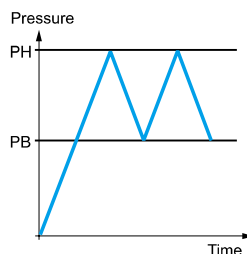
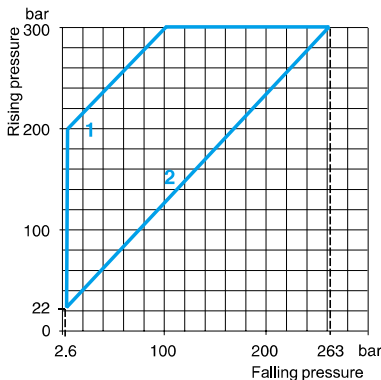
(2) Component materials of units in contact with the fluid, see pages 2/136 and 2/137.

(3) Deviation of the differential at low setting point for switches of the same size: - 1.5 bar, + 1.7 bar (- 21.75 psi, + 24.65 psi).

(4) Deviation of the differential at high setting point for switches of the same size: - 1 bar, + 4 bar (- 14.5 psi, + 58 psi).

(5) Only for control of group 2 fluids, in accordance with directive 97/23/EEC.

Operating curves



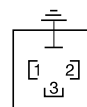
Connection

Terminal model



Connector model

Pressure switch connector pin view



1 → 11 and 13
2 → 12
3 → 14

- 1 Maximum differential
- 2 Minimum differential

— Adjustable value

Other versions

Pressure switches with alternative tapped cable entries: NPT etc. Please consult our Customer Care Centre.