

Sealing boots

- ❑ Prevent dust, sand and water from getting into switches.
- ❑ On toggle versions, also prevent ice from blocking lever action
- ❑ Compatible with frontal sealing options (K and X408).
- ❑ Available in a wide range of colours.
- ❑ A sealing ring or washer is standard supplied with each boot.

MATERIALS AND SPECIFICATIONS

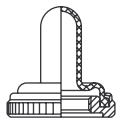
- Boot material : neoprene or silicone (see comparative advantages below)
 - Nut material : brass, nickel plated or matt black
 - Operating temperature :
 - neoprene boots : -20°C to +50°C
 - silicone boots : -40°C to + 85°C
- ++ : excellent, + : good, - : poor

COMPARATIVE ADVANTAGES	TEMPERATURE RANGE		ELASTICITY	MECHANICAL RESISTANCE
	LOW	HIGH		
Silicone	++	++	++	-
Neoprene	-	+	-	++

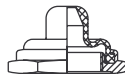
DIFFERENT TYPES OF BOOTS

* Colour options available

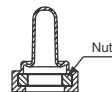
Full-toggle (standard) *



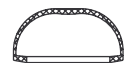
Half-toggle *



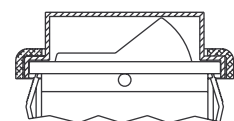
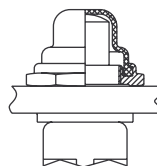
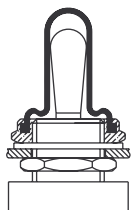
Two-part (no metal parts accessible) *



For double sealing



EXAMPLES OF MOUNTING



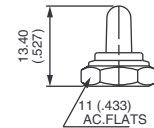
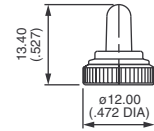
Sealing boots

For toggle switches

For bushing $\varnothing 6 \times 0.75$ (.236 x 0.75) - 5500 series



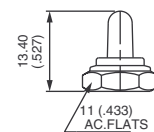
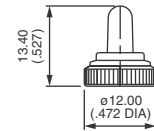
NUT	FULL-TOGGLE SILICONE BOOTS			
	Black	Red	Green	White
Knurled Nickel plated	U1341	U1341-6	U1341-3	U1341-7
Knurled Matt black	U1343	U1343-6	U1343-3	U1343-7
Hex Nickel plated	U1302	U1302-6	U1302-3	U1302-7
Hex Matt black	U1304	U1304-6	U1304-3	U1304-7



For bushing $\varnothing 6,35-40NS$ (1/4-40UNS) - 5000 and 11000 series



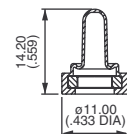
NUT	FULL-TOGGLE SILICONE BOOTS			
	Black	Red	Green	White
Knurled Nickel plated	U1331	U1331-6	U1331-3	U1331-7
Knurled Matt black	U1333	U1333-6	U1333-3	U1333-7
Hex Nickel plated	U1229	U1229-6	U1229-3	U1229-7
Hex Matt black	U1231	U1231-6	U1231-3	U1231-7



For bushing $\varnothing 6,35-40NS$ (1/4-40UNS) - 5000 and 11000 series



NUT	BOOTS SUPPLIED AS 2 SEPARATE PARTS			
	NEOPRENE	SILICONE		
	Black	Red	Green	White
	U5149	U5149-6	U5149-3	U5149-7

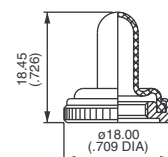


Once the boot is mounted onto the panel, no switch metal part is accessible any more.

For bushing $\varnothing 10 \times 0.75$ (.393 x 0.75) - 10600 series



KNURLED NUT	FULL-TOGGLE SILICONE BOOTS			
	Black	Red	Green	White
Nickel plated	U1612	U1612-6	U1612-3	U1612-7
Matt black	U1614	U1614-6	U1614-3	U1614-7



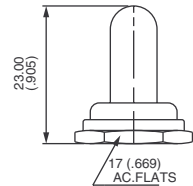
Sealing boots

For toggle switches

For bushing Ø 11,9-32 NS (15/32-32NS) - 12000, 5000M, 3500 and 6000 series



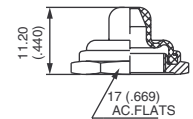
HEX NUT	FULL-TOGGLE SILICONE BOOTS			
	Black	Red	Green	White
Nickel plated	U1031	U1031-6	U1031-3	U1031-7
Matt black	U1024	U1024-6	U1024-3	-



For bushing Ø 11,9-32 NS (15/32-32NS) - 12000, 3500 and 6000 series



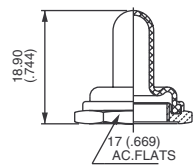
HEX NUT	HALF-TOGGLE SILICONE BOOTS			
	Black	Red	Green	White
Nickel plated	U1600	U1600-6	U1600-3	U1600-7
Matt black	U1602	U1602-6	U1602-3	-



For bushing Ø12 x 0.75 SI (.472x.075 IS) - 4450, 4650 and 1600 series



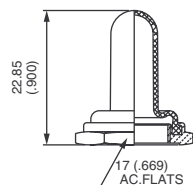
HEX NUT	FULL-TOGGLE BLACK NEOPRENE BOOTS
Nickel plated	U09
Matt black	U223



For bushing Ø 12 x 0.75 SI (.472x.075 IS) - 600H, 6-600H, 600SH, 660, 1000, 1500 and 3600



HEX NUT	FULL-TOGGLE SILICONE BOOTS			
	Black	Red	Green	White
Nickel plated	U1565	U1565-6	U1565-3	U1565-7
Matt black	U1567	U1567-6	U1567-3	-
FULL-TOGGLE BLACK NEOPRENE BOOTS				
Nickel plated	U851			
Matt black	U853			



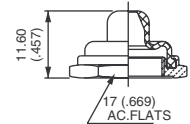
Sealing boots

For toggle switches or pushbutton switches

For bushing $\varnothing 12 \times 0.75$ SI (.472x.075 IS) - 600H, 6-600H, 660, 1000 and 3600 series



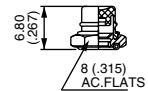
HEX NUT	HALF-TOGGLE SILICONE BOOTS			
	Black	Red	Green	White
Nickel plated	U1151	U1151-6	U1151-3	U1151-7
Matt black	U1153	U1153-6	U1153-3	-
	HALF-TOGGLE BLACK NEOPRENE BOOTS			
Nickel plated	U598			
Matt black	U600			



For bushing $\varnothing 4 \times 0.70$ (.157 x 0.70) - 9500 series



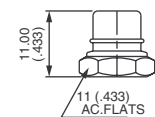
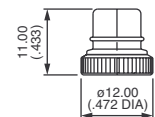
HEX NUT	PUSHBUTTON SILICONE BOOTS			
	Black	Red	Green	White
Nickel plated	U1829	U1829-6	U1829-3	U1829-7
Matt black	U1831	U1831-6	U1831-3	U1831-7



For bushing $\varnothing 6,35-40$ NS (1/4-40UNS) - 18000, 9000 and 13000 series



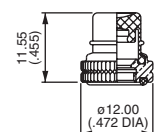
NUT	PUSHBUTTON SILICONE BOOTS			
	Black	Red	Green	White
Knurled Nickel plated	U1401	U1401-6	U1401-3	U1401-7
Knurled Matt black	U1403	U1403-6	U1403-3	U1403-7
Hex Nickel plated	U1318	U1318-6	U1318-3	U1318-7
Hex Matt black	U1320	U1320-6	U1320-3	U1320-7



For bushing $\varnothing 6,35-40$ NS (1/4-40 UNS) - 8000 series



KNURLED NUT	PUSHBUTTON SILICONE BOOTS			
	Black	Red	Green	White
Nickel plated	U4301	U4301-6	U4301-3	U4301-7



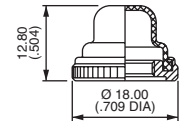
Sealing boots

For pushbutton switches

For bushing $\varnothing 10 \times 0.75$ (.393 x 0.75) - 10400 series



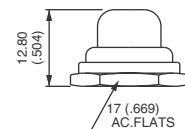
KNURLED NUT	PUSHBUTTON SILICONE BOOTS			
	Black	Red	Green	White
Nickel plated	U1624	U1624-6	U1624-3	U1624-7
Matt black	U1626	U1626-6	U1626-3	U1626-7



For bushing $\varnothing 11,9-32$ NS (15/32-32UNS) - 13000X778, 13000X768 and 8000-6X934 series



HEX NUT	PUSHBUTTON SILICONE BOOTS			
	Black	Red	Green	White
Nickel plated	U589	U589-6	U589-3	U589-7
Matt black	U590	U590-6	U590-3	-

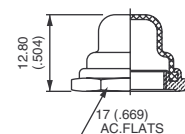


For long plunger (-9) care should be taken over the panel thickness.

For bushing $\varnothing 12 \times 0.75$ SI (.472x.075 IS) - 1200, 4700 and 4800 series



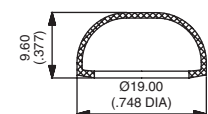
HEX NUT	PUSHBUTTON SILICONE BOOTS			
	Black	Red	Green	White
Nickel plated	U1654	U1654-6	U1654-3	U1654-7
Matt black	U1656	U1656-6	U1656-3	-
	PUSHBUTTON BLACK NEOPRENE BOOTS			
Nickel plated	U31			
Matt black	U225			
Chrome plated	U224			



For double sealing on IP and IB-IS series



SILICONE BOOT	
Transparent	U5125
Blue	U5125-1
Black	U5125-2
Red	U5125-6



Operating temperature : -40°C to +125°C

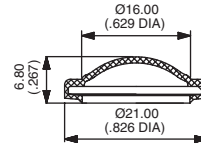
Sealing boots

For pushbutton switches or rocker switches

For double sealing on IA series



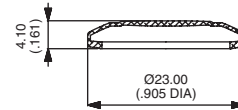
BLACK SILICONE BOOT
U6602



For AV series (models with Ø 19 mm bushing)



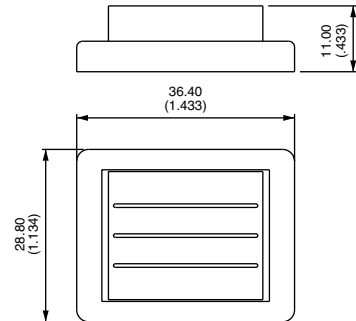
SILICONE BOOT	
Black	U2187-2
Green	U2187-3
Grey	U2187-4
Yellow	U2187-5
Red	U2187-6
White	U2187-7
Transparent	U2187-8



For 2600 series



TRANSPARENT SILICONE BOOT
U2150



For FM series



TRANSPARENT PVC BOOT
U5720

