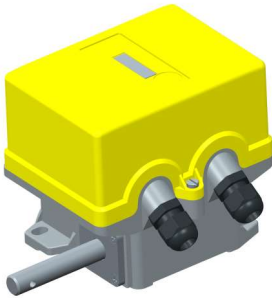




Version and options available

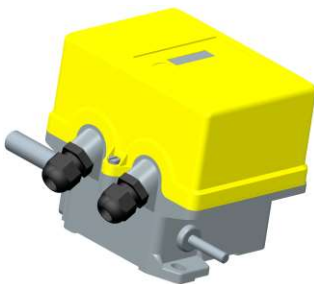
Base Fixing



Flanged Fixing
(with FLG accessories)



Rear shaft



Characteristics

Case	- aluminium housing - self extinguishing cover V0 UL94
Ratio	012-033-050-100-200
Protection class	IP65
Shaft type	- steel mounted on ball bearing - coaxial shaft version available
Fixing type	- bottom - front (flanged with FLG accessories)
Microswitch	8A – 250V – silver plated contacts IEC/EN61058-1 / UL1054 1NC-1NO changeover fast trigger self cleaning positive opening markings
Microswitch max n° / notes	max 6 - micrometric adjustment
Cam block	self-lubricating with transparent support for easier cam viewing
Cable entry	M20 (max 2) included
Options (see page 34)	- 3 different cam shapes - 15 pinions

LIMIT SWITCHES

Ratio	Single shaft		Rear shaft		Microswitch cams
	4 microswitches	6 microswitches	4 microswitches	6 microswitches	
012	FGR2006	FGR20066	FGR2006B	FGR2006B6	STANDARD
033	FGR2007	FGR20076	FGR2007B	FGR2007B6	STANDARD
050	FGR2008	FGR20086	FGR2008B	FGR2008B6	STANDARD
100	FGR2009	FGR20096	FGR2009B	FGR2009B6	STANDARD
200	FGR2010	FGR20106	FGR2010B	FGR2010B6	STANDARD

See page 34 for complete specifications



C (90°)



B (15°)



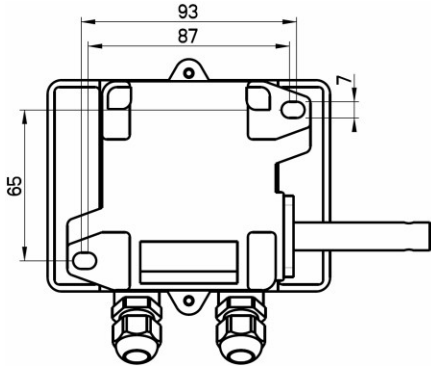
Standard A (30°)



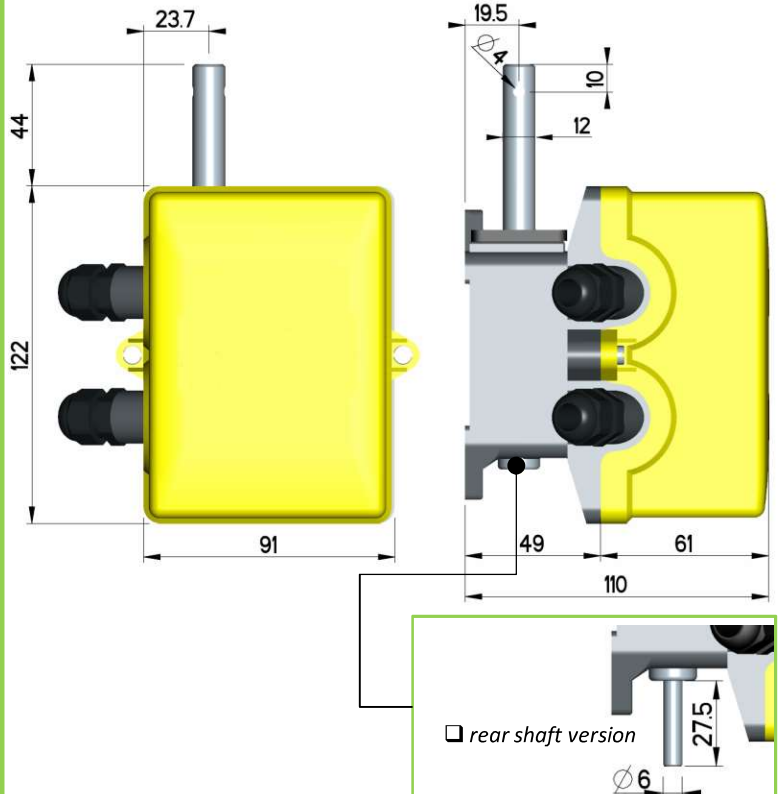
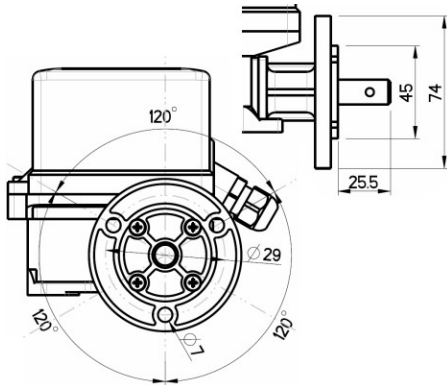
Fixing holes

Dimensions

Base fixing



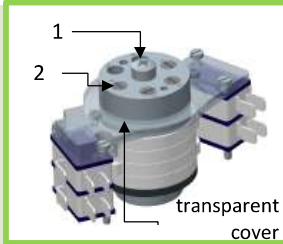
Flanged fixing (FLG)



LIMIT SWITCHES

Microswitch system calibration guide

- I. Loosen the main screw (1)
- II. Adjust the screws (2)
- III. Tighten the main screw (1)



Spare parts / Accessories

Microswitch



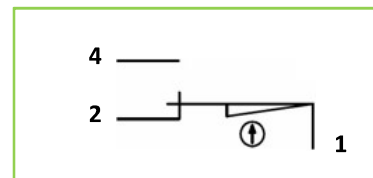
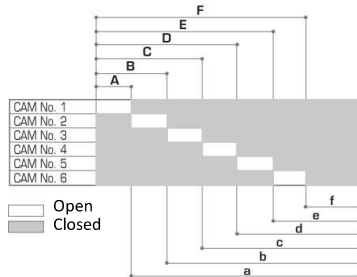
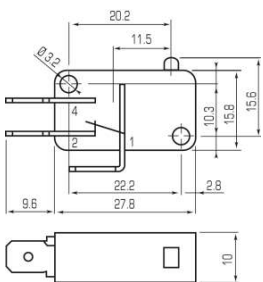
Flange



MFI

FLG

Microswitch table activation (with the standard cam "A")



Ratio	Revolutions referred to the cam's activation											
	A	a	B	b	C	c	D	d	E	e	F	f
012	1.25	10.75	2.5	9.5	3.75	8.25	5	7	6.25	5.75	7.5	4.5
033	3.5	29.5	7	26	10.5	22.5	14	19	17.5	15.5	21	13
050	5	45	10	40	15	35	20	30	25	25	30	20
100	10	90	20	80	30	70	40	60	50	50	60	40
200	20	180	40	160	60	140	80	120	100	100	120	80

NOTE:
The movement refers to the action of the cam on contact 1-2 (NC). The microswitch have all changeover contacts.