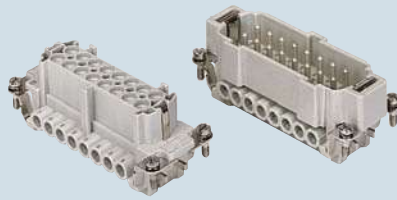


enclosures:  
size "77.27" page:

**C-TYPE IP65/IP66** ..... 250 - 256  
**C7 IP67, two levers** ..... 276  
**V-TYPE IP65/IP66, single lever** 282/292 - 295  
**BIG hoods** ..... 312 - 315  
**T-TYPE IP65 insulating** ..... 330 - 331  
**T-TYPE / W IP66 insulating** ..... 340 - 341  
**HYGIENIC T-TYPE / H IP66/IP69** ..... 354 - 355  
**HYGIENIC T-TYPE / C IP66/IP69, -50 °C** 362 - 363  
**W-TYPE for aggressive environments** ..... 375  
**EMC** ..... 394  
**central lever** ..... 408 - 409  
**IP68** ..... 428 - 431  
**LS-TYPE** ..... 454 - 455

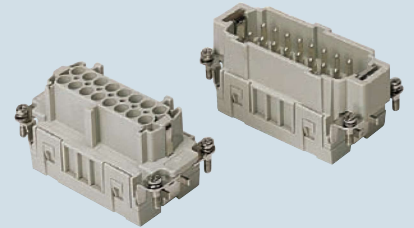
panel supports: page:  
**COB** ..... 462 - 463

**inserts,  
screw terminal connections**



silver plated contacts

**inserts,  
spring terminal connections**

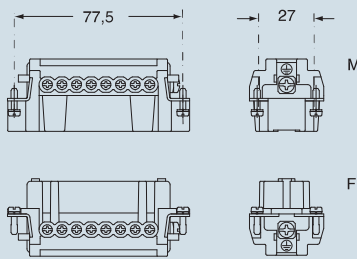


silver plated contacts

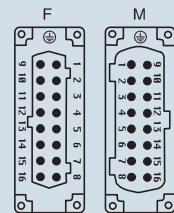
description	part No.	part No.
indirect, with plate 1) female inserts with female contacts male inserts with male contacts	<b>CNEF 16 T</b> <b>CNEM 16 T</b>	
direct, without plate 2) female inserts with female contacts male inserts with male contacts	<b>CNEF 16 TX</b> <b>CNEM 16 TX</b>	
spring terminal female inserts with female contacts male inserts with male contacts		<b>CSEF 16</b> <b>CSEM 16</b>

- characteristics according to EN 61984:  
**16A 500V 6kV 3**  
**16A 400/690V 6kV 2**
- cUL - UL for USA and Canada (CNE), UL (CSE), CSA, CCC\*, GL, EAC certified
- \* CQC certification being applied for
- rated voltage according to UL/CSA: 600V
- insulation resistance:  $\geq 10 \text{ G}\Omega$
- ambient temperature limit:  $-40 \text{ }^\circ\text{C} \dots +125 \text{ }^\circ\text{C}$
- are made of self-extinguishing thermoplastic resin UL 94 V0
- mechanical life:  $\geq 500$  cycles
- contact resistance:  $\leq 1 \text{ m}\Omega$  (CNE) -  $\leq 3 \text{ m}\Omega$  (CSE)
- for maximum current load, see the following load curves inserts, for more information see page 559

dimensions in mm

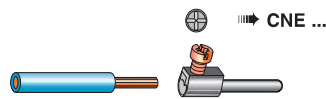


contacts side (front view)

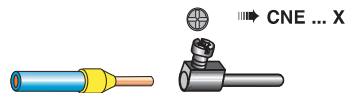


- inserts with plate for section conductors:  
0,5 - 4 mm<sup>2</sup> - AWG 20 - 12
- inserts without plate for section conductors:  
0,25 - 2,5 mm<sup>2</sup> - AWG 24 - 14
- conductors stripping length: 7 mm
- terminal screw torque: 0,5 Nm (4.4 lbf.in), for more information see page 34 and 35

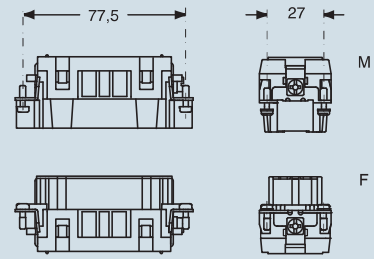
1) for unprepared conductors



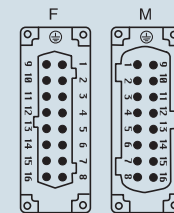
2) for bush terminal conductors



dimensions in mm

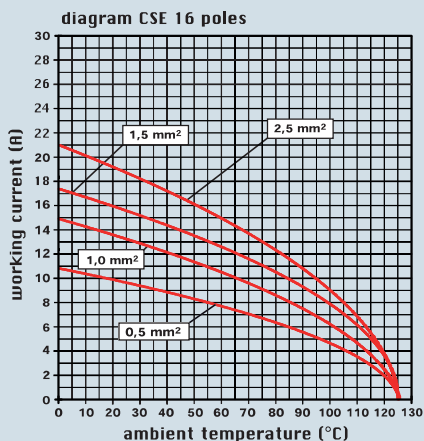
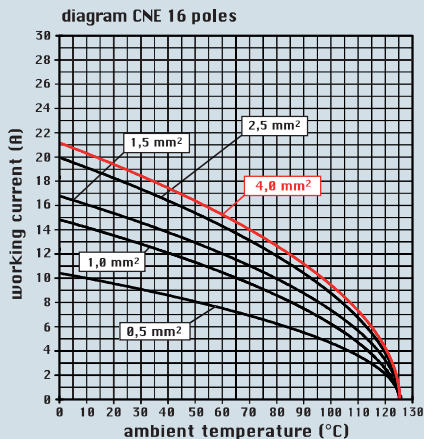
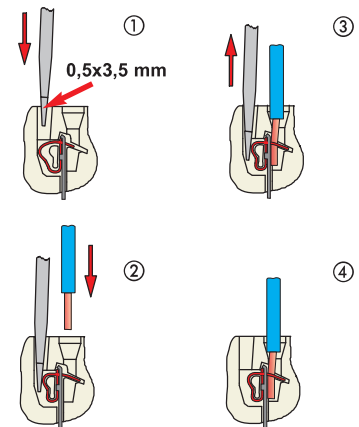


contacts side (front view)



- inserts for section conductors:  
0,14 - 2,5 mm<sup>2</sup> - AWG 26 - 14
- conductors stripping length: 9...11 mm

connection with spring terminal



dimensions shown are not binding and may be changed without notice

CNE - CSE