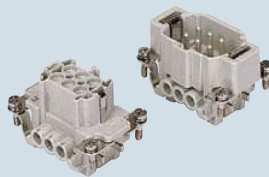


enclosures:  
size "44.27" page:

C-TYPE IP65/IP66 ..... 240 - 243  
 C7 IP67, single lever ..... 274  
 V-TYPE IP65/IP66, single lever 280/284 - 286  
 BIG hoods ..... 304 - 306  
 T-TYPE IP65 insulating ..... 326 - 327  
 T-TYPE / W IP66 insulating ..... 336 - 337  
 HYGIENIC T-TYPE / H IP66/IP69 ..... 350 - 351  
 HYGIENIC T-TYPE / C IP66/IP69, -50 °C 358 - 359  
 W-TYPE for aggressive environments ..... 373  
 EMC ..... 392  
 central lever ..... 404 - 405  
 IP68 ..... 420 - 423  
 LS-TYPE ..... 450 - 451

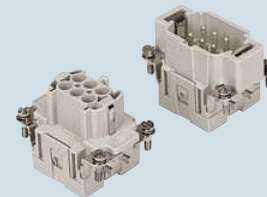
panel supports: page:  
 COB ..... 462 - 463

inserts,  
screw terminal connections



silver plated contacts

inserts,  
spring terminal connections



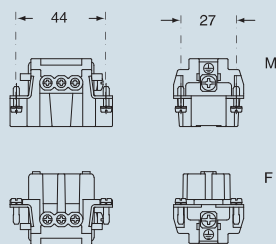
silver plated contacts

description	part No.
indirect, with plate 1) female inserts with female contacts male inserts with male contacts	CNEF 06 T CNEM 06 T
direct, without plate 2) female inserts with female contacts male inserts with male contacts	CNEF 06 TX CNEM 06 TX
spring terminal female inserts with female contacts male inserts with male contacts	CSEF 06 CSEM 06

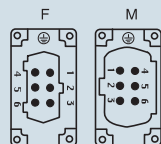
description	part No.
indirect, with plate 1) female inserts with female contacts male inserts with male contacts	CNEF 06 T CNEM 06 T
direct, without plate 2) female inserts with female contacts male inserts with male contacts	CNEF 06 TX CNEM 06 TX
spring terminal female inserts with female contacts male inserts with male contacts	CSEF 06 CSEM 06

- characteristics according to EN 61984:  
**16A 500V 6kV 3**  
**16A 400/690V 6kV 2**
- cUL - UL for USA and Canada (CNE), UL (CSE), CSA, CCC \*, GL, EAC certified  
 \* CQC certification being applied for
- rated voltage according to UL/CSA: 600V
- insulation resistance:  $\geq 10 \text{ G}\Omega$
- ambient temperature limit:  $-40 \text{ }^\circ\text{C} \dots +125 \text{ }^\circ\text{C}$
- are made of self-extinguishing thermoplastic resin UL 94 V0
- mechanical life:  $\geq 500$  cycles
- contact resistance:  $\leq 1 \text{ m}\Omega$  (CNE) -  $\leq 3 \text{ m}\Omega$  (CSE)
- for maximum current load, see the following load curves inserts, for more information see page 559

dimensions in mm

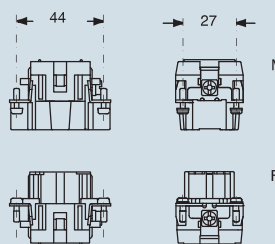


contacts side (front view)

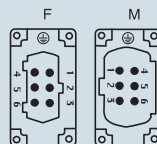


- inserts with plate for section conductors:  
 0,5 - 4 mm<sup>2</sup> - AWG 20 - 12
- inserts without plate for section conductors:  
 0,25 - 2,5 mm<sup>2</sup> - AWG 24 - 14
- conductors stripping length: 7 mm
- terminal screw torque: 0,5 Nm (4.4 lb.in), for more information see page 34 and 35

dimensions in mm



contacts side (front view)



- inserts for section conductors:  
 0,14 - 2,5 mm<sup>2</sup> - AWG 26 - 14
- conductors stripping length: 9...11 mm

diagram CNE 06 poles

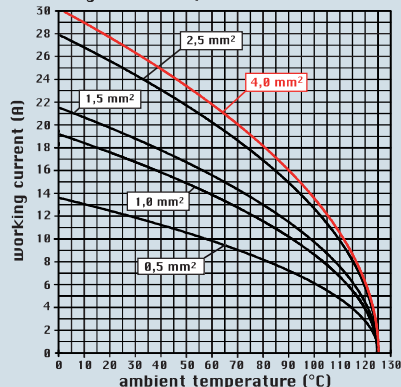
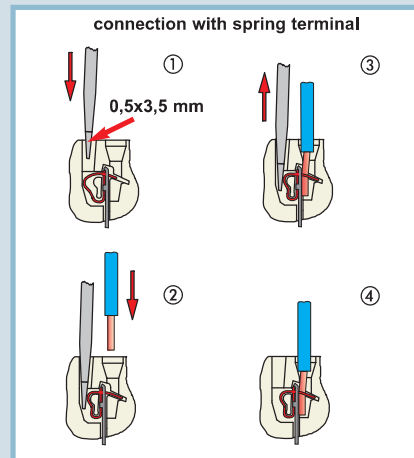
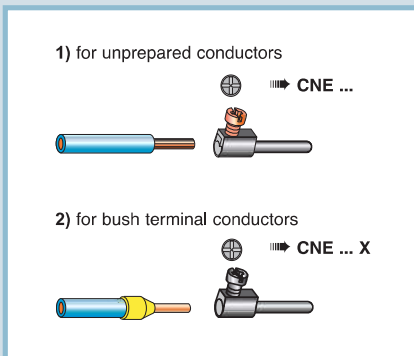
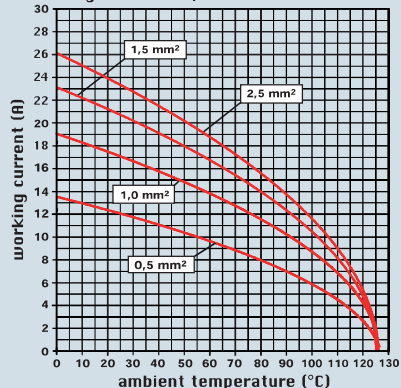


diagram CSE 06 poles



dimensions shown are not binding and may be changed without notice