



inserts:	page:
CK ..... 3 poles + ⊕	48
CK ..... 4 poles + ⊕	48
CKS ..... 3 poles + ⊕	49
CKS ..... 4 poles + ⊕	49
CD ..... 7 poles + ⊕	53
CD ..... 8 poles	54
CQ ..... 12 poles + ⊕	165
CQ ..... 5 poles + ⊕	166

insert dimensions:  
21 x 21 mm

bulkhead mounting housings

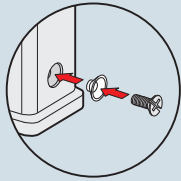


angled bulkhead mounting housings



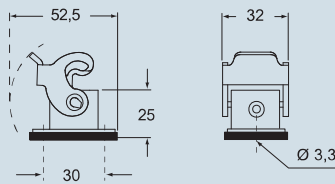
description	part No.	part No. (entry - Pg 11)	part No. (entry - M 20)
with lever	<b>CK 03 I</b> (white)		
with lever	<b>CK 03 IN</b> (black)		
without cable entry, with lever		<b>CK 03 IA</b> (white)	
without cable entry, with lever		<b>CK 03 IAN</b> (black)	
with cable entry and lever		<b>CK 03 IAPS</b> (white)	<b>MK IAP20</b> (white)
with cable entry and lever		<b>CK 03 IAPNS</b> (black)	<b>MK IAPN20</b> (black)
gasket and screw kit for IP66/IP67 <sup>1)</sup> for CK, CQ 05, CKS inserts	<b>CKR 65</b>	<b>CKR 65</b>	
gasket and screw kit for IP66/IP67 <sup>1)</sup> for CD 07/08 inserts	<b>CKR 65 D</b>	<b>CKR 65 D</b>	

1) To obtain the protection rating IP66/IP67 a kit is provided that includes a gasket to fit under the insert fixing screws supplied with the kit (see illustrative example).  
CQ 12 inserts are already supplied with a gasket and screw which ensure IP66/IP67 protection rating.



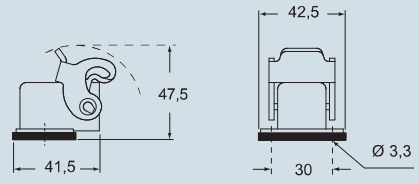
dimensions in mm

CK I(N)

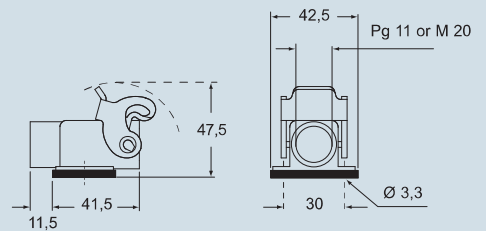


dimensions in mm

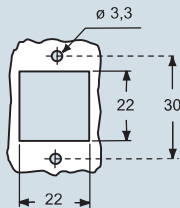
CK IA(N)



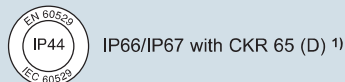
CK IAP(N)S and MK IAP(N)



panel cut-out for enclosures, in mm



**CRUS**® Type 12  
Type 4/4X only  
with CKR 65 (D)



dimensions shown are not binding  
and may be changed without notice

C-TYPE - size 21.21