

SENTRON, fuse switch disconnecter 3NP1, 3-pole, NH00, 160 A, for assembly and installation on mounting plate, Flachanschluss, cover level 45mm



Model		
product brandname		SENTRON
Product designation		3NP1 fuse switch disconnecter
Design of the product		cover level 45 mm
Design of the load switch / Strip form		No
Type of the driving mechanism / motor drive		No

General technical data		
Number of poles		3
Size of disconnecting link		00 and 000
Size of fuse link		NH000, NH00
Continuous current / at 35 °C / rated value	A	160
Let-through current / with closed switch / maximum permissible	kA	23
cut-off value $I^{**2}t_{max.} / 500 V$	A ² ·s	158 000
Power factor		
• at AC-22 B		0.65
• at AC-23 B		0.45
• with capacitive load		-0.25
circuit-breaker / Design		3NP11

Mechanical service life (switching cycles) / typical		2 000
Fuse system		LV HRC fuse
Voltage		
Insulation voltage / rated value	V	690
Power factor / at AC-21 B		0.95
Surge voltage resistance / rated value	kV	8
Protection class		
Protection class IP		
• with closed switch / with cover or cable lug cover		IP40
• with closed switch / without cover or cable lug cover		IP30
• on the front		IP40
• open		IP20
Dissipation		
Power loss [W]		
• for rated value of the current / at AC / in hot operating state / per pole	W	4
• maximum	W	12
Electricity		
Continuous current		
• rated value	A	160
• at 40 °C / rated value	A	155
• at 45 °C / rated value	A	145
• at 50 °C / rated value	A	140
• at 55 °C / rated value	A	133
Let-through current / with high-speed activation / maximum permissible	kA	15
Let-through current / I_c / maximum permissible		
• 400 V	A	23 000
• 500V	A	23 000
cut-off value I²t_{max} / 400 V	A ² ·s	158 000
Main circuit		
Operating voltage		
• at AC / rated value / maximum	V	690
• at DC / rated value	V	440
• at DC / rated value / maximum	V	440
Operating current / with capacitive load		
• at 400 V / maximum	A	72
• at 500 V / maximum	A	55

Suitability

Suitability for use

• Main switch	No
• switch disconnecter	Yes
• EMERGENCY OFF switch	No
• safety switch	Yes
• maintenance/repair switch	Yes

Product details

Product feature / interlock	Yes
-----------------------------	-----

Product component

• Trip indicator	No
• Phase failure monitoring	No
• undervoltage release	No
• undervoltage release with leading contact	No

Product feature / sealable	Yes
----------------------------	-----

Product extension

• Auxiliary switch	Yes
• optional	
— locking capability	Yes
— motor drive	No
— Phase failure monitoring	Yes
— fuse monitoring	Yes
— Voltage trigger	No
— Overvoltage protection monitoring	Yes

Product function

Product function

• fuse monitoring	No
• Overvoltage protection monitoring	No

Short circuit

Conditional short-circuit current (I_q)

• rated value	kA	80
• at AC / at 500 V / with high-speed activation / rated value	kA	80
• at AC / at 690 V / with high-speed activation / rated value	kA	80
• with closed switch / at AC / at 500 V / rated value	kA	120
• with closed switch / at AC / at 690 V / rated value	kA	120

Connections

Arrangement of electrical connectors / for main current circuit		other
Connectable conductor cross-section / for main contacts		
• single or multi-stranded / minimum	mm ²	2.5
• single or multi-stranded / maximum	mm ²	95
• stranded / minimum	mm ²	2.5
• stranded / maximum	mm ²	95
Tightening torque / with screw-type terminals		
• minimum	N·m	10
• maximum	N·m	12
Type of electrical connection / for main current circuit		busbar connection

Mechanical Design





Height	mm	202
Width	mm	105.8
Depth	mm	86.5
Mounting type		mounting plate
Mounting type		
• floor mounting		Yes
• front mounting		No
• front mounting with 4-hole attachment		No
• front mounting with central attachment		No
• rail mounting		No
Net weight	kg	0.73

Environmental conditions

Degree of pollution		3
Ambient temperature		
• during operation / minimum	°C	-25
• during operation / maximum	°C	55
• during storage / minimum	°C	-50
• during storage / maximum	°C	80

Certificates

Equipment marking		
• acc. to DIN EN 61346-2		Q
• acc. to DIN EN 81346-2		Q

General Product Approval	Declaration of Conformity	Test Certificates	Shipping Approval
 CCC	 UL	 EG-Konf.	<div style="display: flex; justify-content: space-around;"> <div data-bbox="810 226 1002 286"> Typprüfbescheinigung/Werkszeugnis </div> <div data-bbox="1029 226 1220 315"> spezielle Prüfbescheinigungen </div> </div> <div style="text-align: center; margin-top: 10px;">  LRS </div>

Further information

Information- and Downloadcenter (Catalogs, Brochures,...)

<http://www.siemens.com/lowvoltage/catalogs>

Industry Mall (Online ordering system)

<https://eb.automation.siemens.com/mall/en/WW/Catalog/Product/3NP1133-1CA10>

Service&Support (Manuals, Certificates, Characteristics, FAQs,...)

<http://support.automation.siemens.com/WW/view/en/3NP1133-1CA10/all>

Image database (product images, 2D dimension drawings, 3D models, device circuit diagrams, ...)

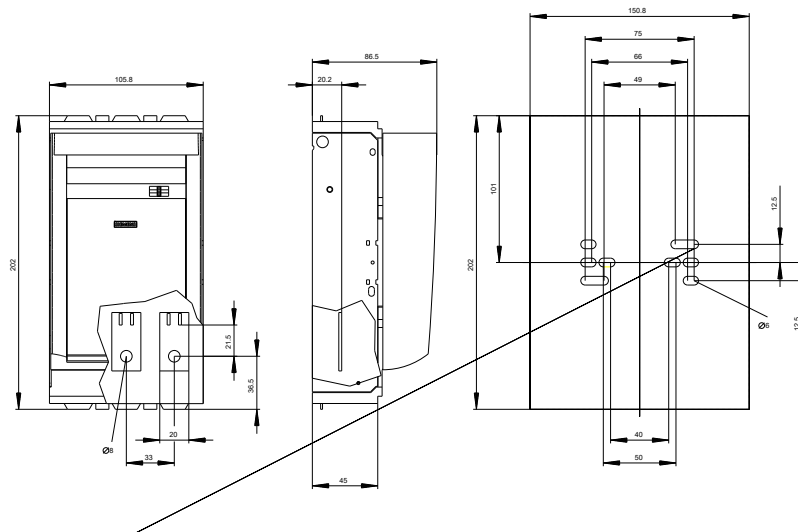
http://www.automation.siemens.com/bilddb/cax_en.aspx?mlfb=3NP1133-1CA10

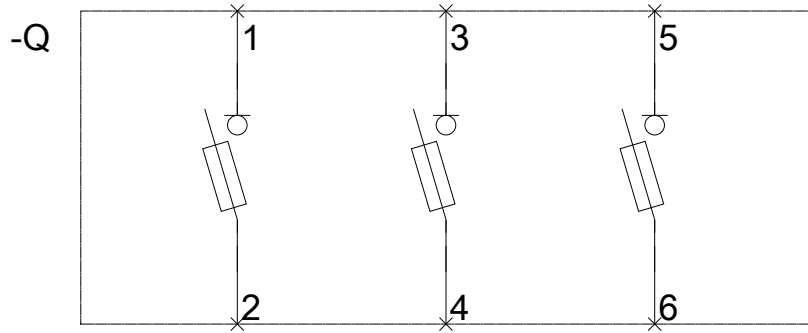
CAX-Online-Generator

<http://www.siemens.com/cax>

Tender specifications

<http://ausschreibungstexte.siemens.com/tiplv>





last modified:

10/17/2016